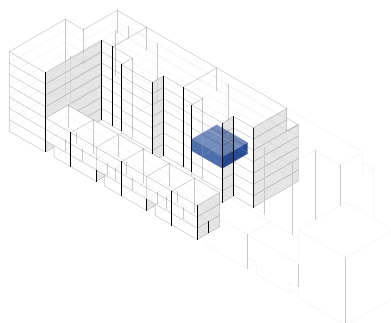
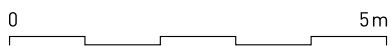
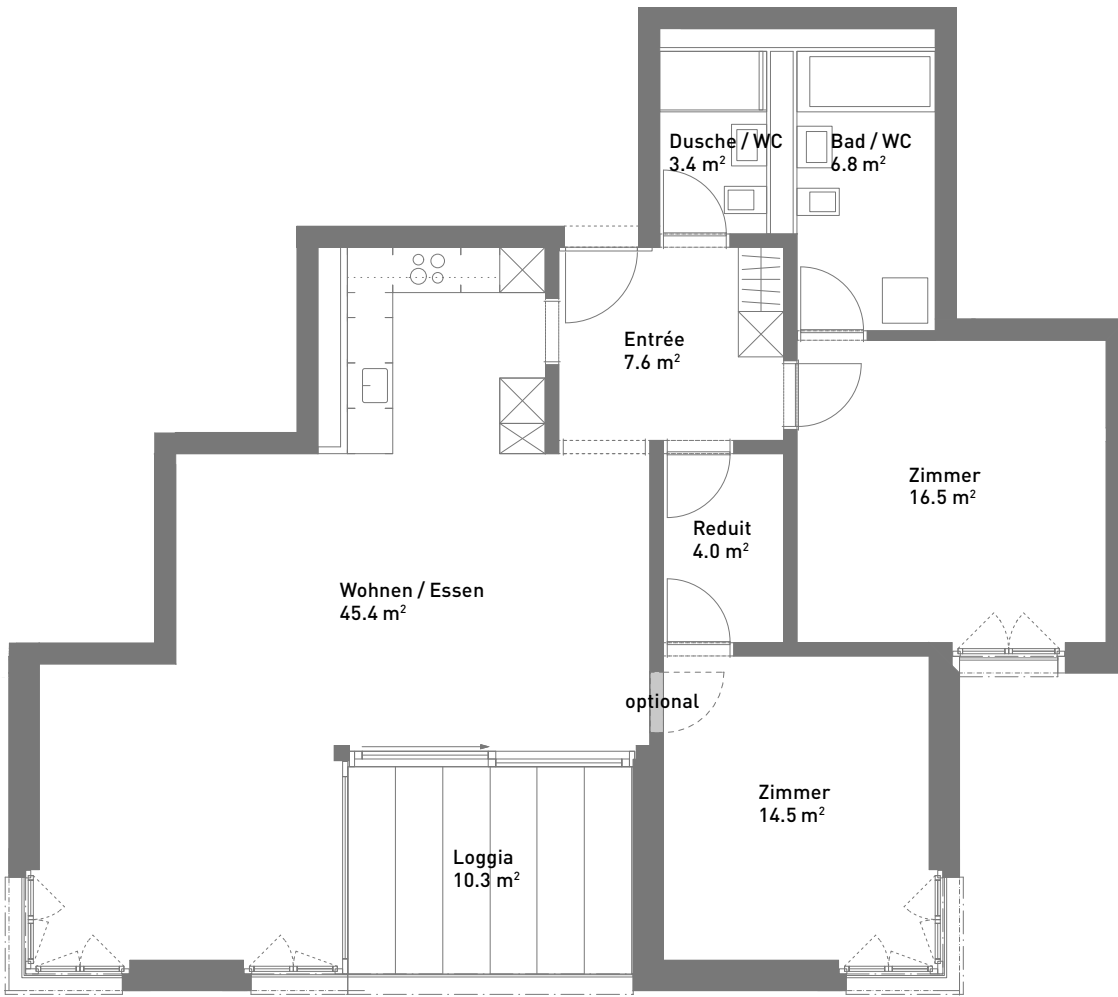


3.5-Zimmer-Wohnung, ca. 98 m²

Masstab 1:100 (Format A4)



Spiserstrasse 8

Wohnung Nr. 8.303

3. Obergeschoss

Aussenflächen

ca. 10 m²

Keller

ca. 8 m²

Nicht tragende Wand



Spiserstrasse, Zürich

