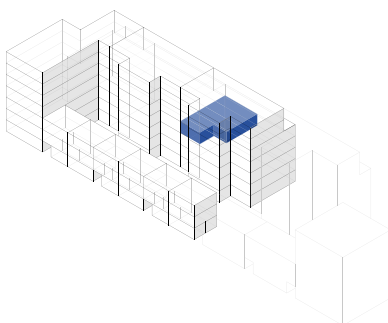
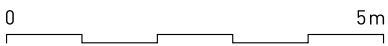
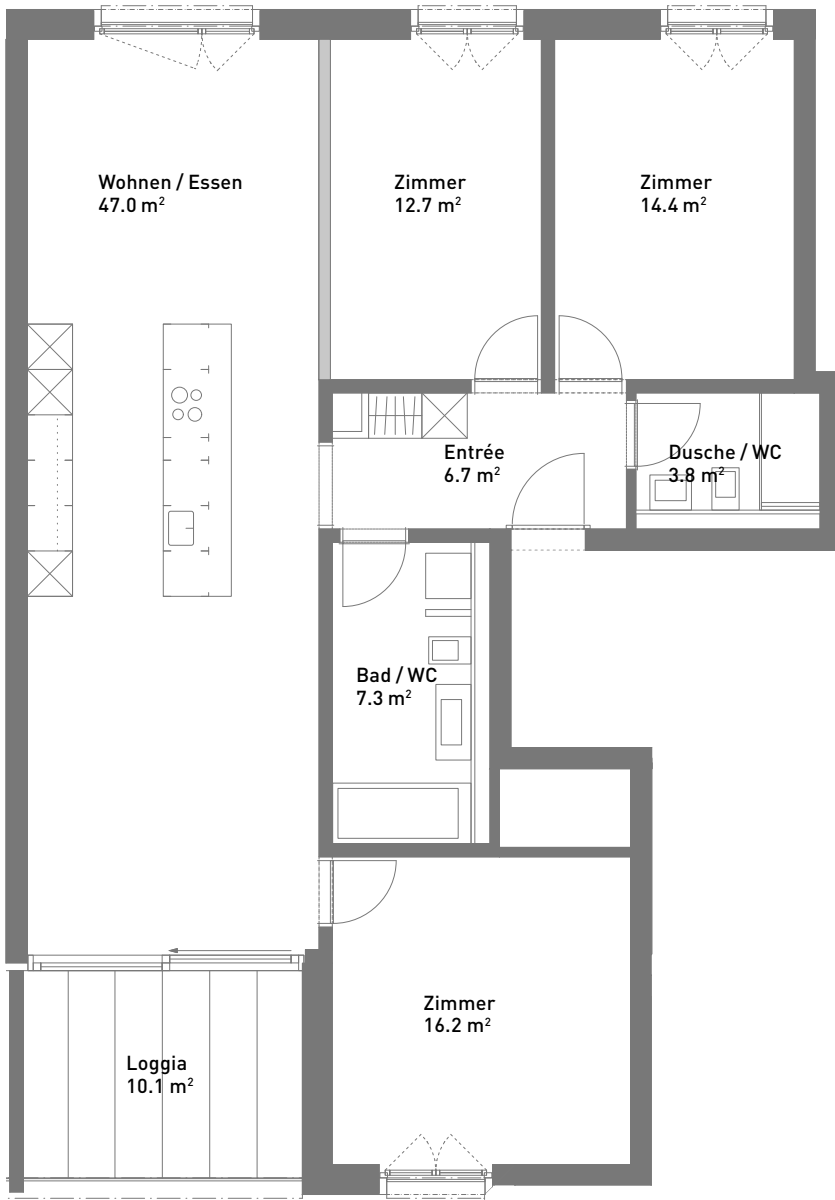


4.5-Zimmer-Wohnung, ca. 108 m²

Masstab 1:100 (Format A4)



Spiserstrasse 8	Wohnung Nr. 8.301
3. Obergeschoss	
Aussenflächen	ca. 10 m ²
Keller	ca. 8 m ²
Nicht tragende Wand	■

Spiserstrasse, Zürich

