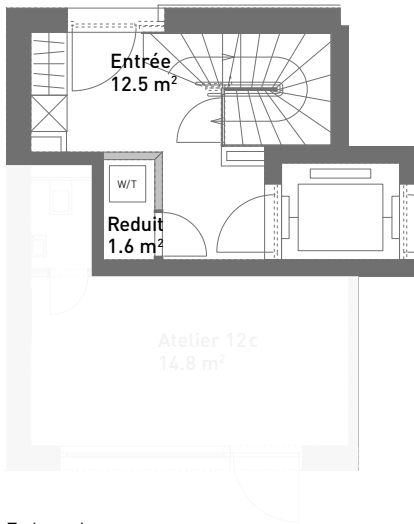
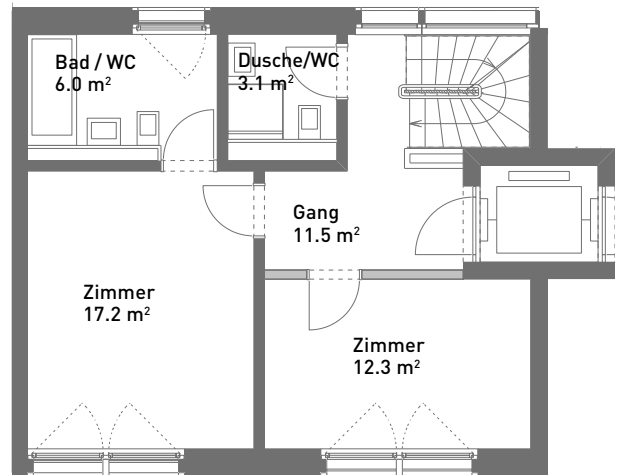


3.5-Zimmer-Townhouse, ca. 105 m²

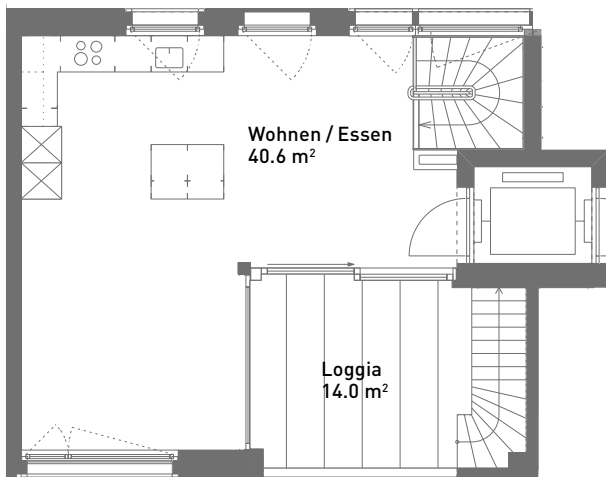
Masstab 1:125 (Format A4)



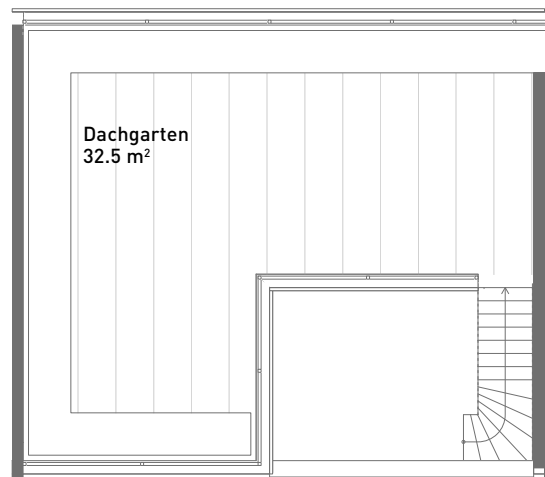
Erdgeschoss



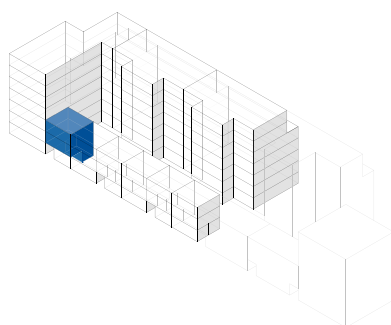
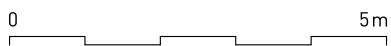
1. Obergeschoss



2. Obergeschoss



3. Obergeschoss



Spiserstrasse 12b	Townhouse Nr. 12b.2
Erdgeschoss–2. Obergeschoss	
Aussenflächen	ca. 46 m ²
Keller	ca. 8 m ²
Nicht tragende Wand	■

Spiserstrasse, Zürich