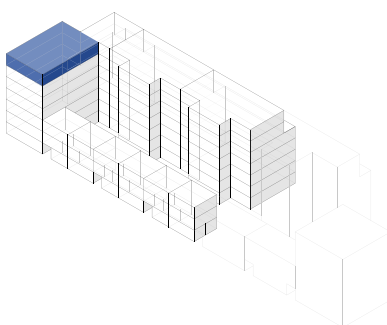
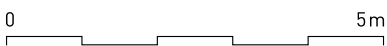
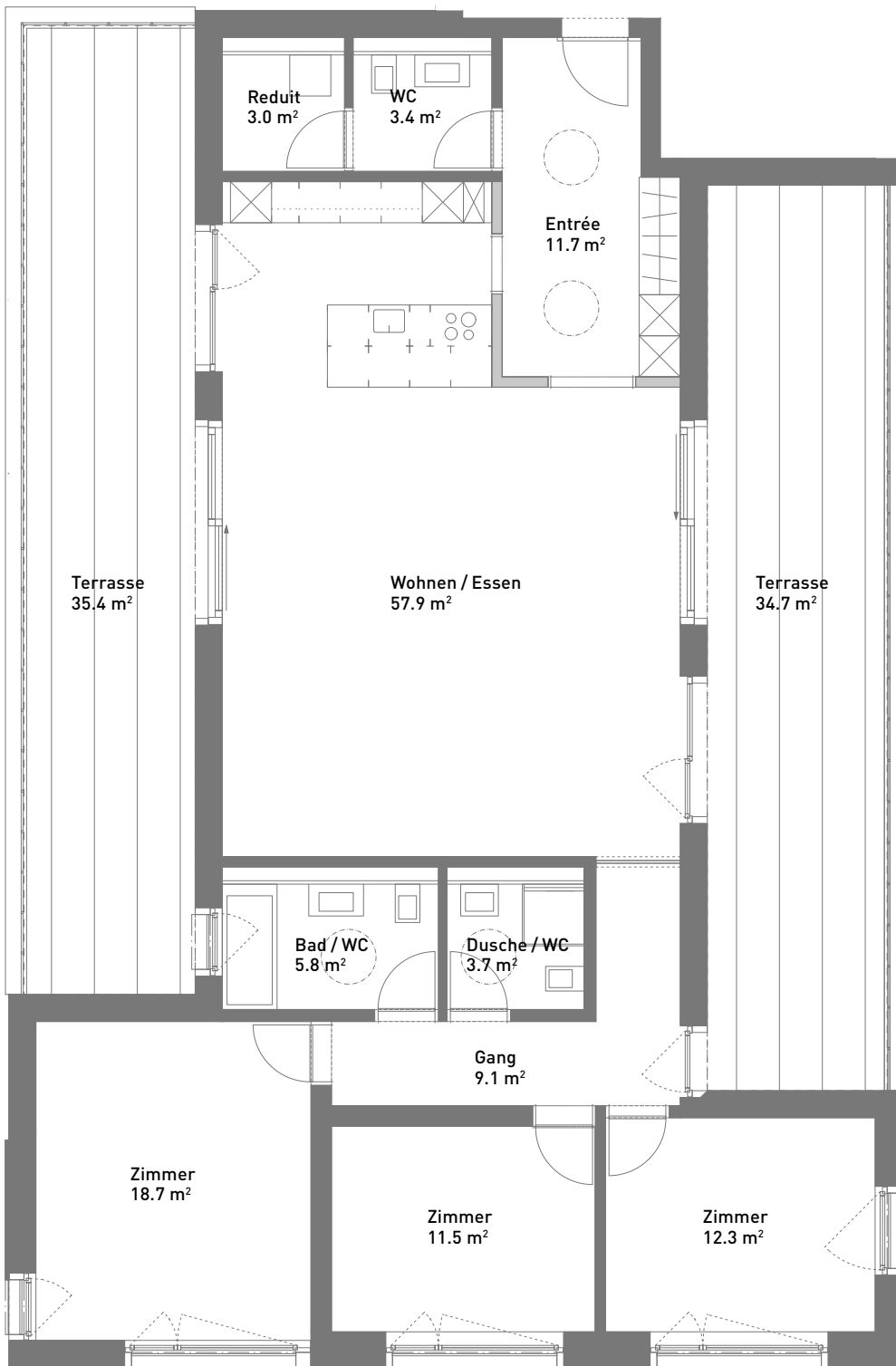


# 4.5-Zimmer-Wohnung, ca. 137 m<sup>2</sup>

Massstab 1:100 (Format A4)



Spiserstrasse 12	Wohnung Nr. 12.601
Attika	
Aussenflächen	ca. 70 m <sup>2</sup>
Keller	ca. 8 m <sup>2</sup>
Nicht tragende Wand	■



Spiserstrasse, Zürich

