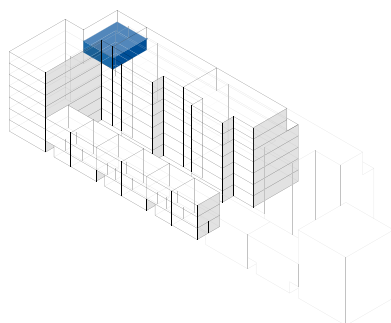
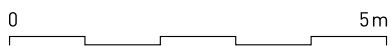
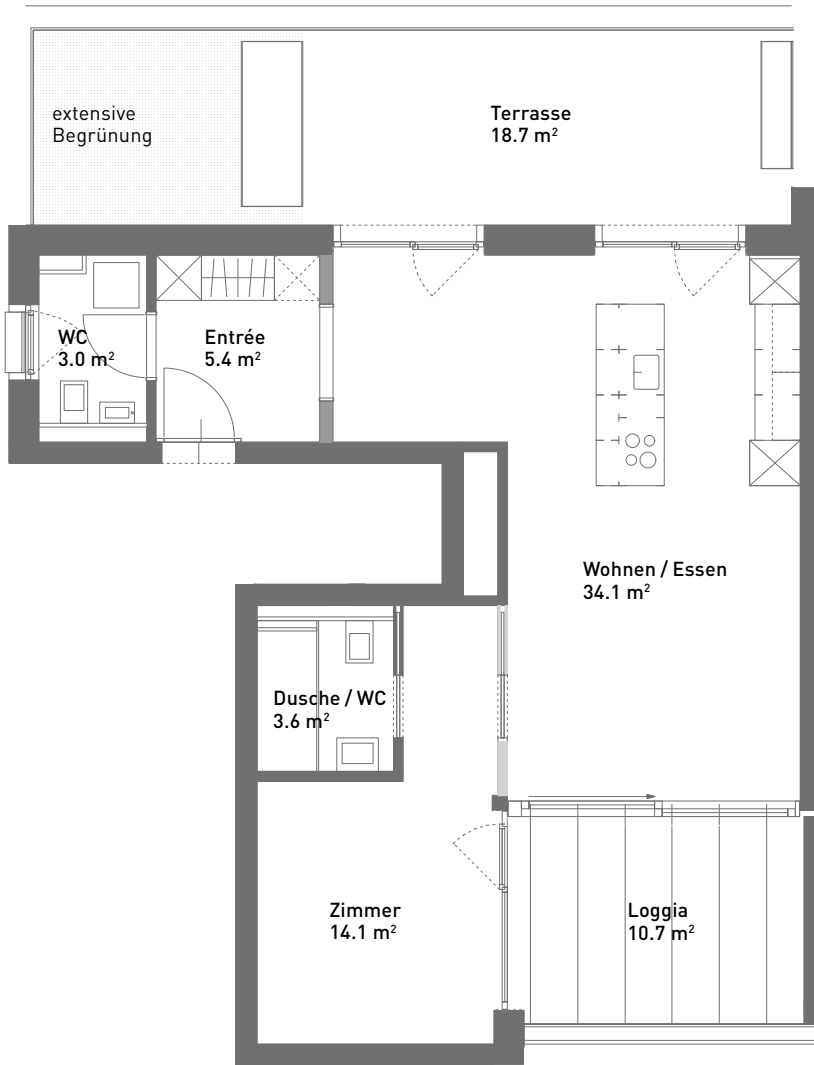


2.5-Zimmer-Wohnung, ca. 59 m²

Masstab 1:100 (Format A4)



Spiserstrasse 12	Wohnung Nr. 12.501
5. Obergeschoss	
Aussenflächen	ca. 29 m ²
Keller	ca. 5 m ²
Nicht tragende Wand	■



Spiserstrasse, Zürich