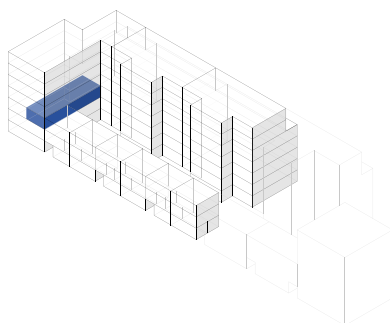
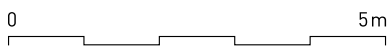
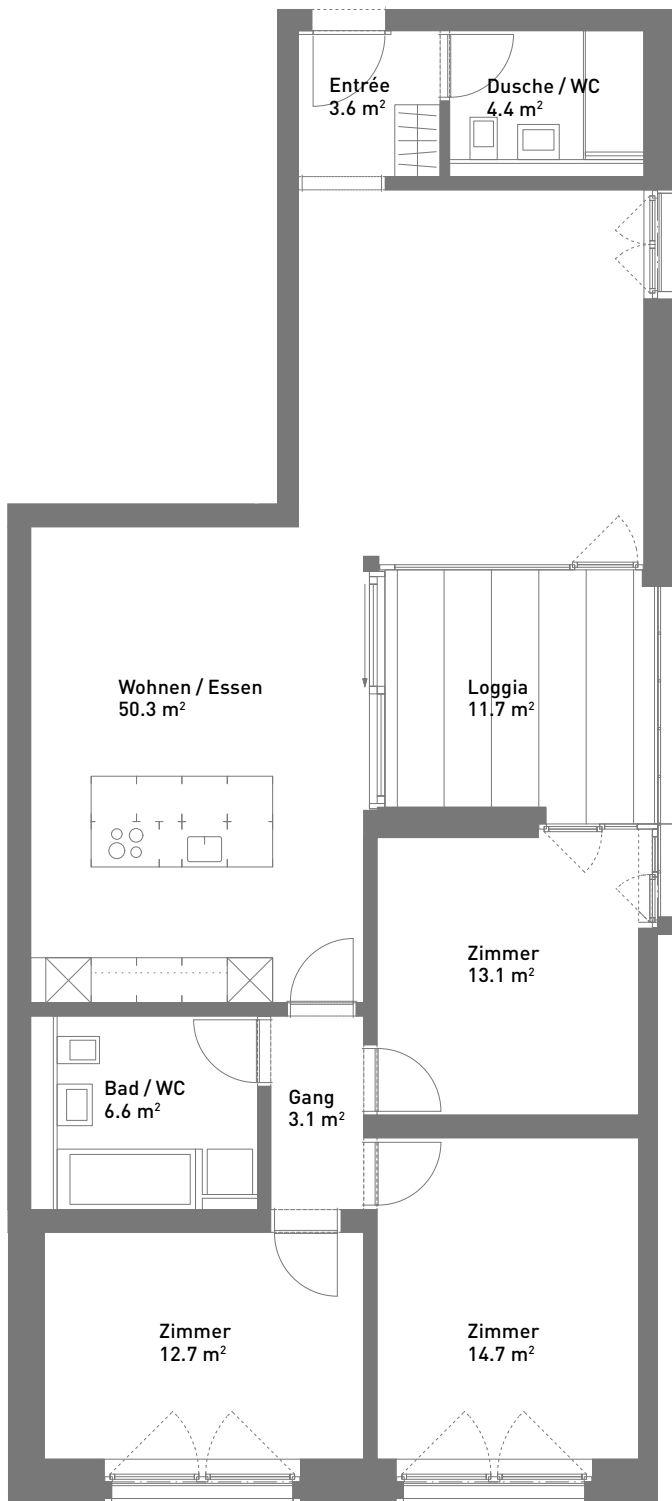


4.5-Zimmer-Wohnung, ca. 108 m²

Masstab 1:100 (Format A4)



| | |
|------------------|-----------------------|
| Spiserstrasse 12 | Wohnung Nr. 12.202 |
| 2. Obergeschoss | |
| Aussenflächen | ca. 11 m ² |
| Keller | ca. 8 m ² |

Spiserstrasse, Zürich

