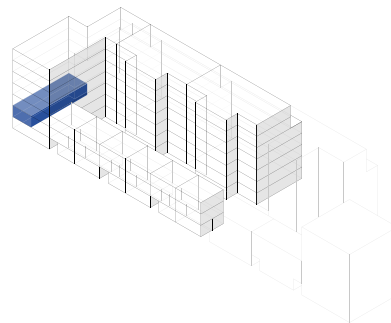
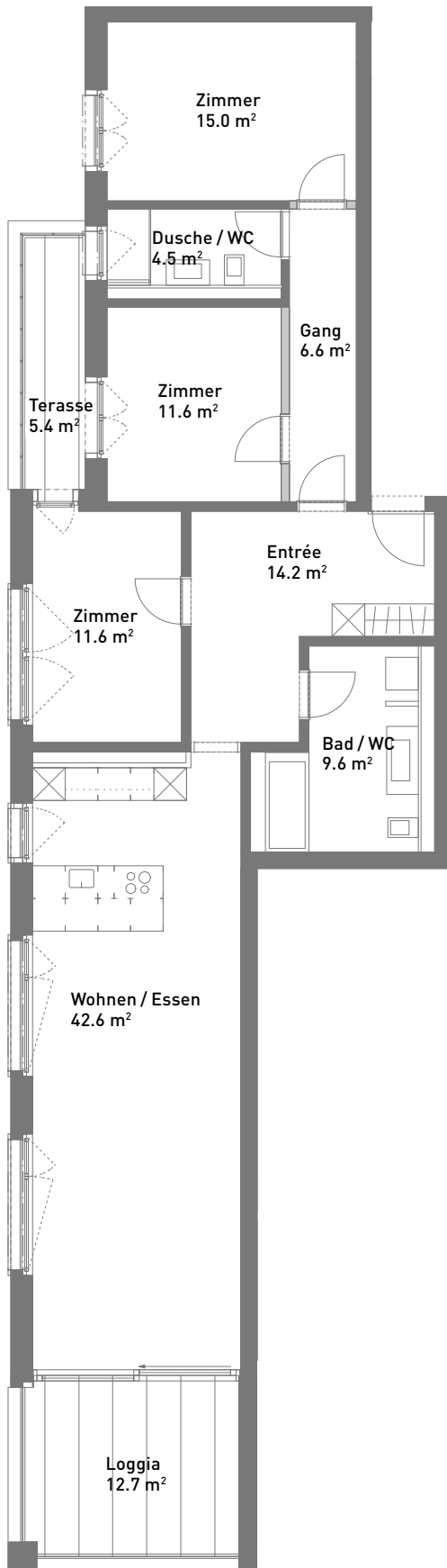
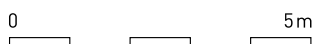


4.5-Zimmer-Wohnung, ca. 115 m²

Massstab 1:125 (Format A4)



Spiserstrasse 12	Wohnung Nr. 12.103
1. Obergeschoss	
Aussenflächen	ca. 18 m ²
Keller	ca. 8 m ²
Nicht tragende Wand	■



Spiserstrasse, Zürich

