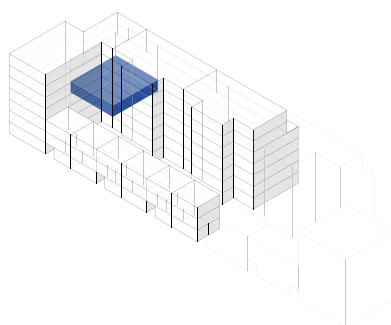
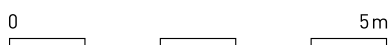
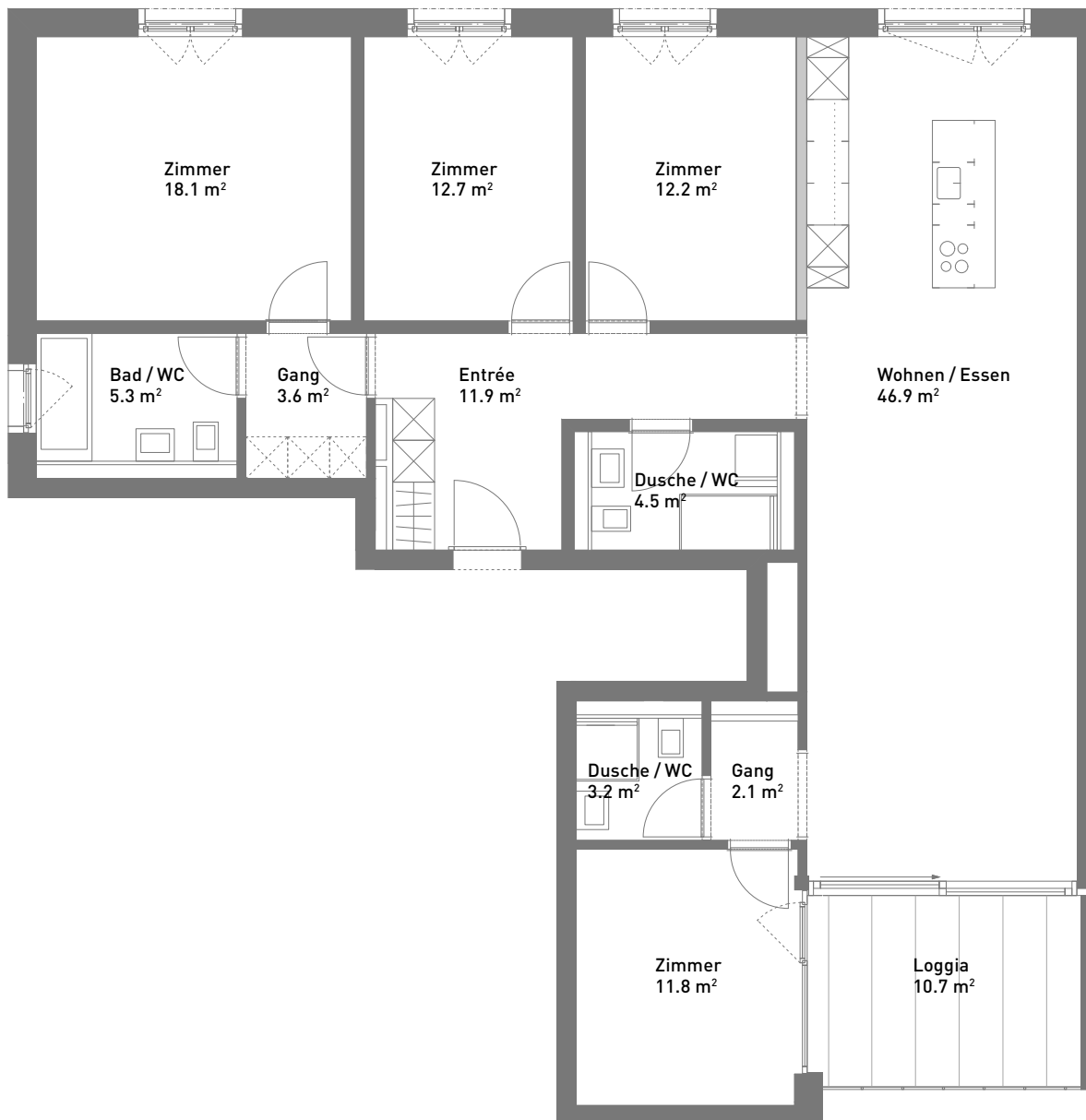


5.5-Zimmer-Wohnung, ca. 132 m²

Massstab 1:100 (Format A4)



Spiserstrasse 12	Wohnung Nr. 12.101
1. Obergeschoss	
Aussenflächen	ca. 10 m ²
Keller	ca. 8 m ²
Nicht tragende Wand	■



Spiserstrasse, Zürich

