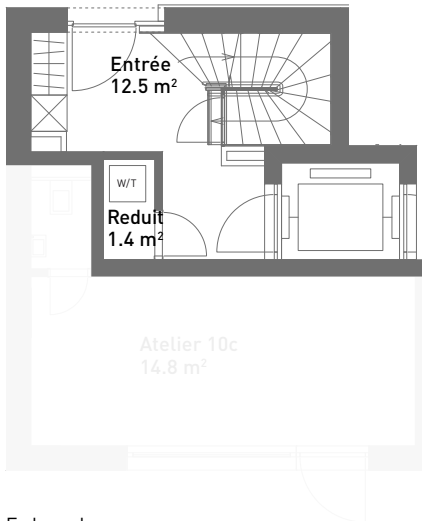
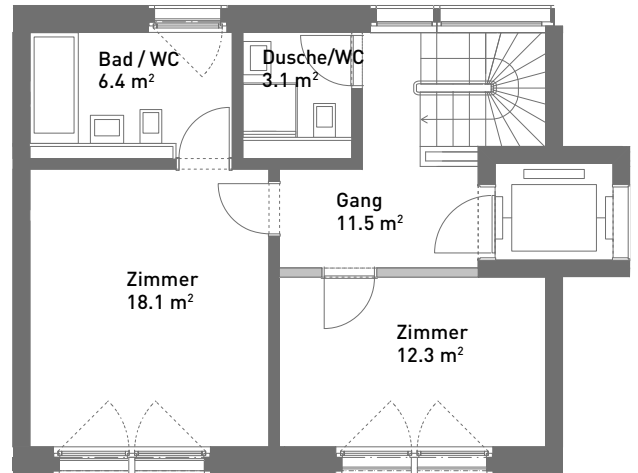


# 3.5-Zimmer-Townhouse, ca. 107 m<sup>2</sup>

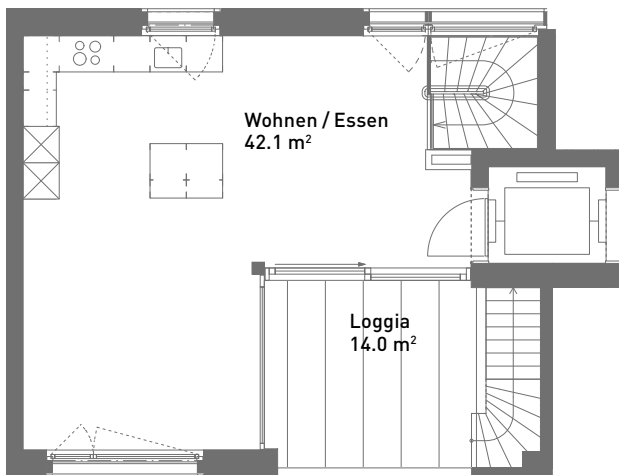
Masstab 1:125 (Format A4)



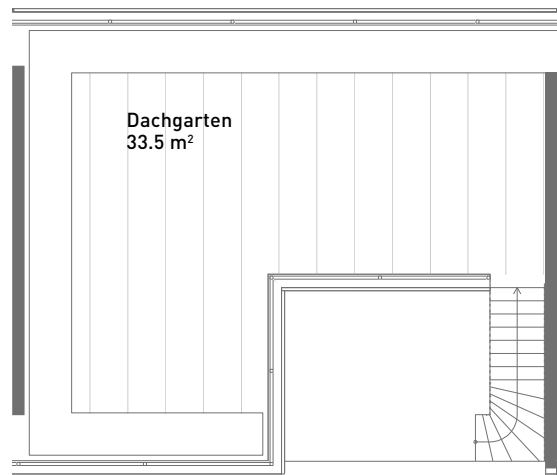
Erdgeschoss



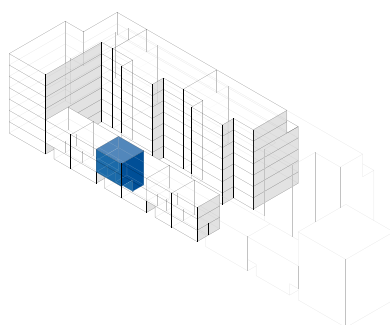
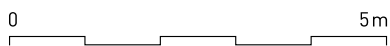
1. Obergeschoss



2. Obergeschoss



3. Obergeschoss



Spiserstrasse 10b	Townhouse Nr. 10b.2
Erdgeschoss–2. Obergeschoss	
Aussenflächen	ca. 47 m <sup>2</sup>
Keller	ca. 8 m <sup>2</sup>
Nicht tragende Wand	■

Spiserstrasse, Zürich