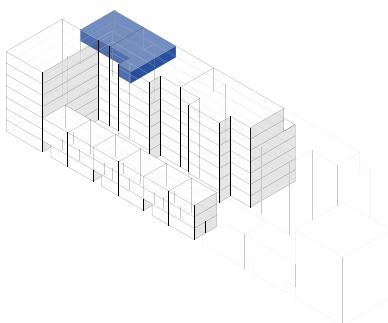
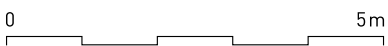
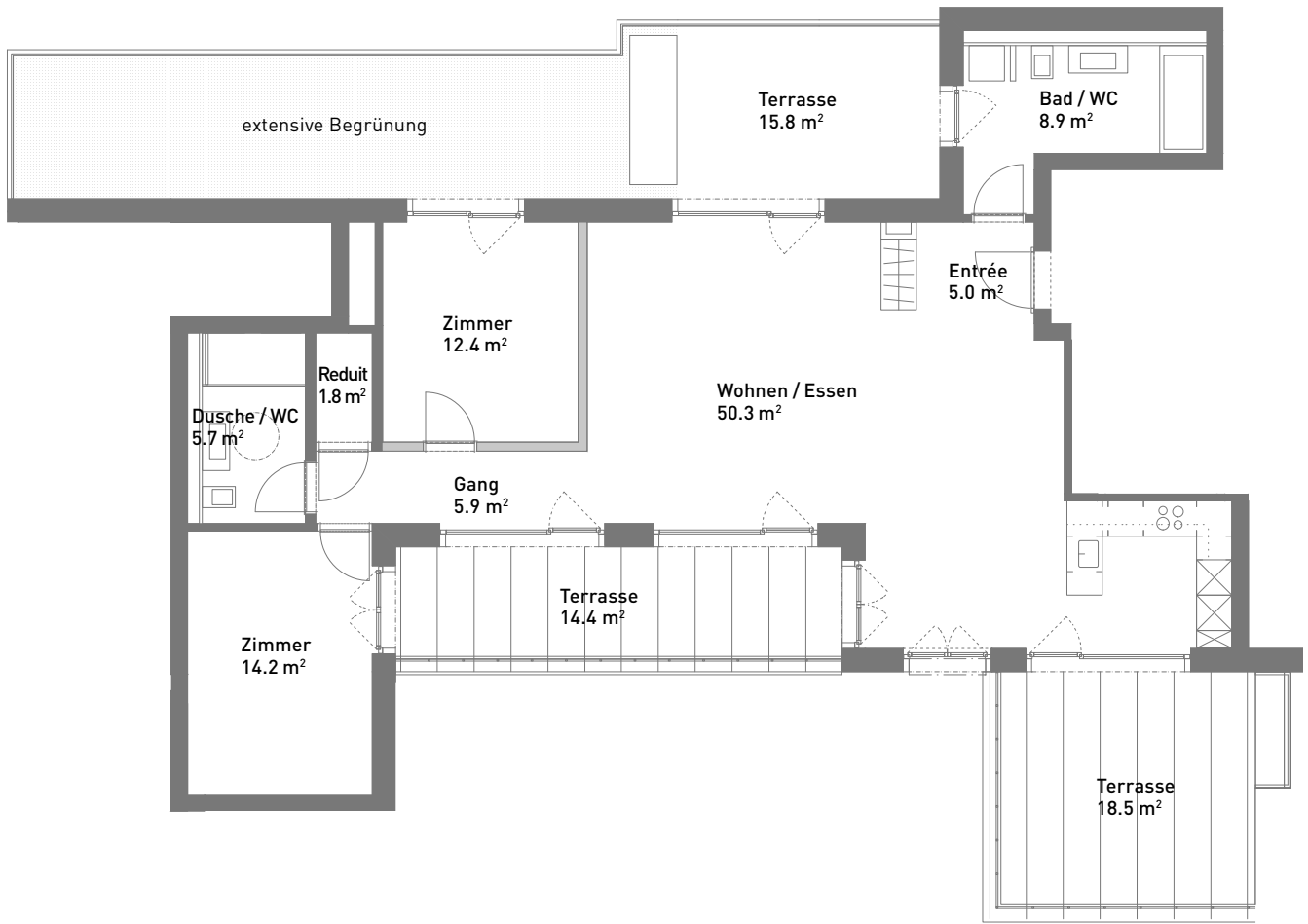


3.5-Zimmer-Attika-Wohnung, ca. 104 m²

Masstab 1:125 (Format A4)



Spiserstrasse 10	Wohnung Nr. 10.601
Attika	
Aussenflächen	ca. 48 m ²
Keller	ca. 8 m ²
Nicht tragende Wand	■

Spiserstrasse, Zürich

