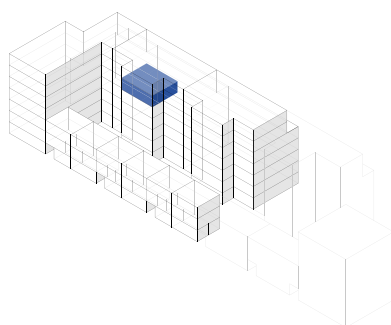
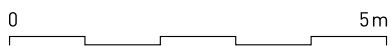
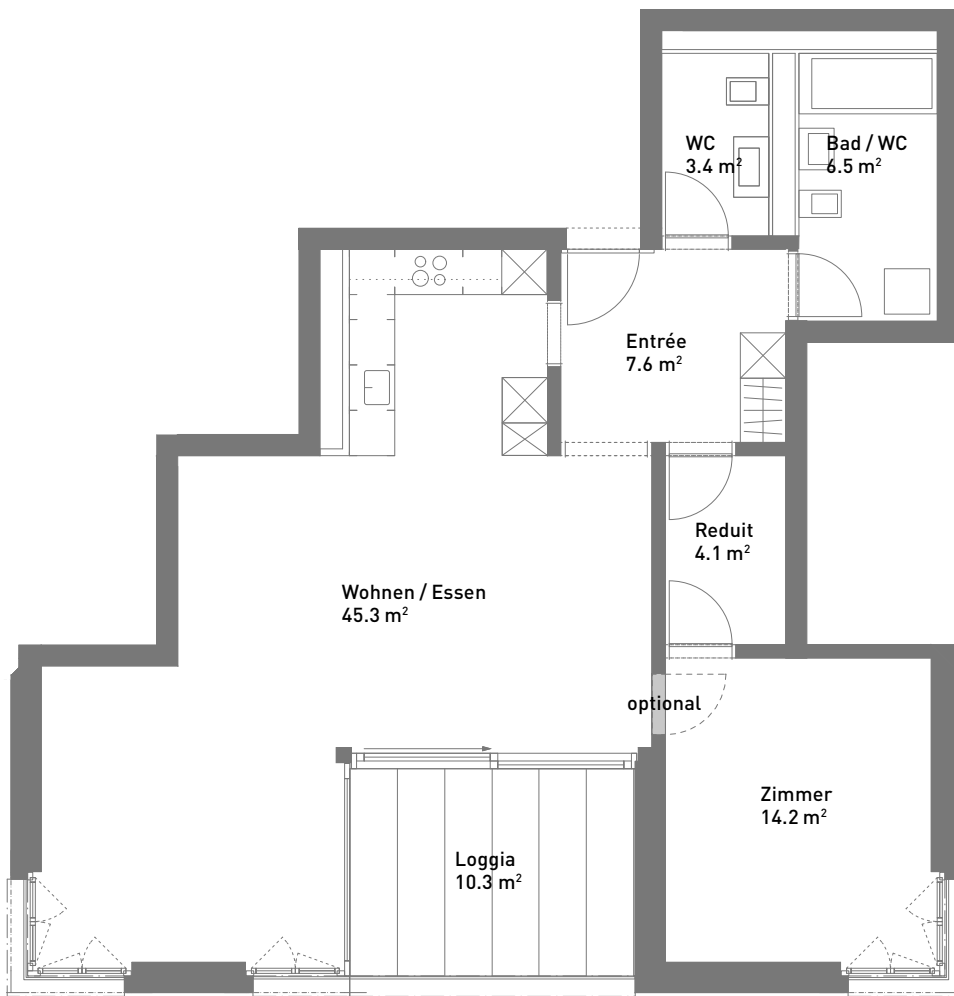


# 2.5-Zimmer-Wohnung, ca. 81 m<sup>2</sup>

Masstab 1:100 (Format A4)



Spiserstrasse 10	Wohnung Nr. 10.503
5. Obergeschoss	
Aussenflächen	ca. 10 m <sup>2</sup>
Keller	ca. 6 m <sup>2</sup>
Nicht tragende Wand	■



Spiserstrasse, Zürich

