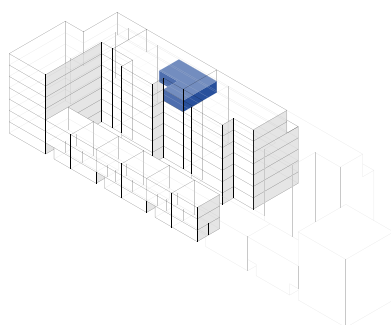
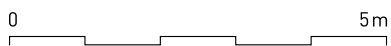
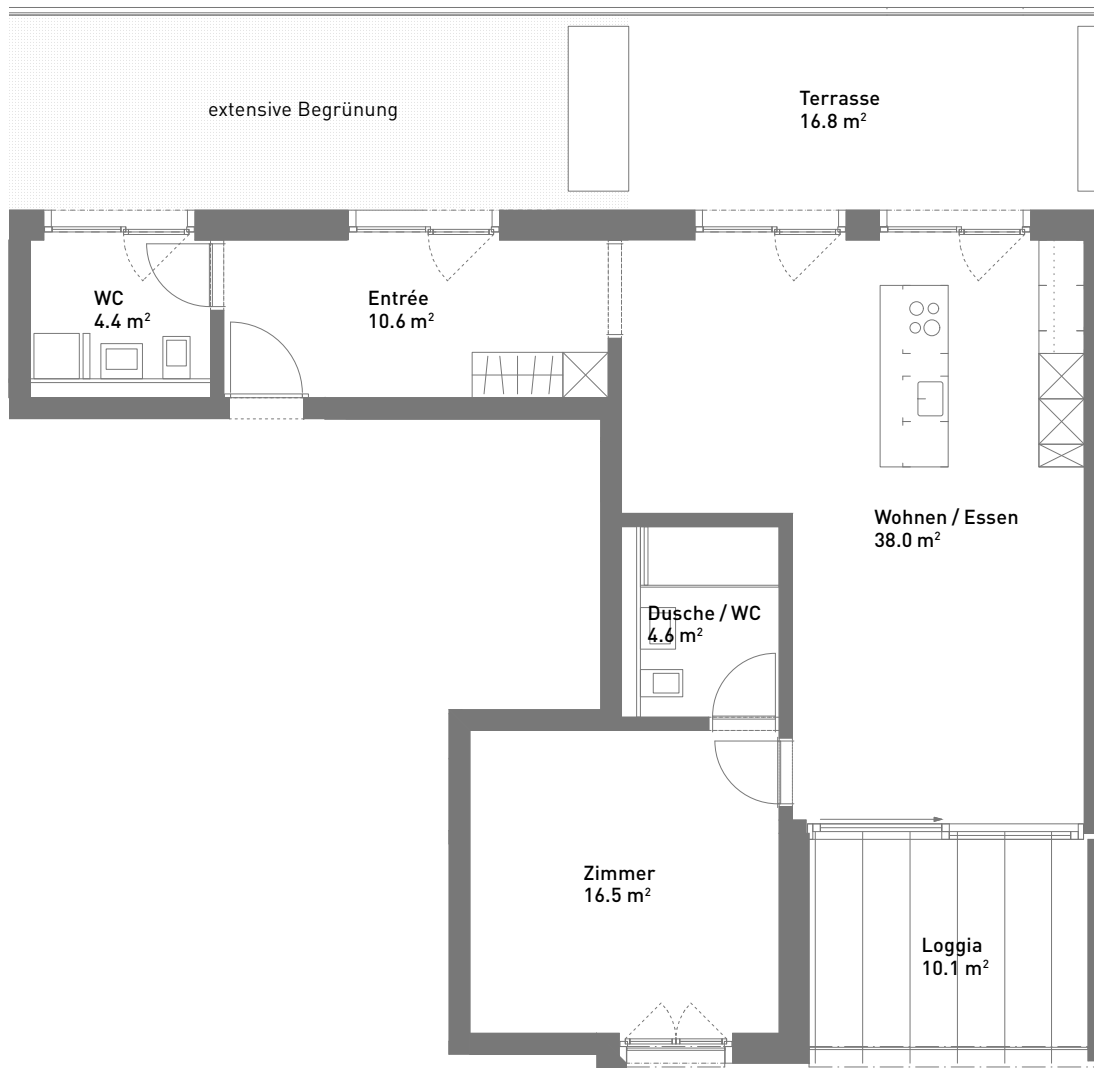


# 2.5-Zimmer-Wohnung, ca. 74 m<sup>2</sup>

Massstab 1:100 (Format A4)



Spiserstrasse 10

Wohnung Nr. 10.502

5. Obergeschoss

Aussenflächen

ca. 26 m<sup>2</sup>

Keller

ca. 5 m<sup>2</sup>



Spiserstrasse, Zürich

