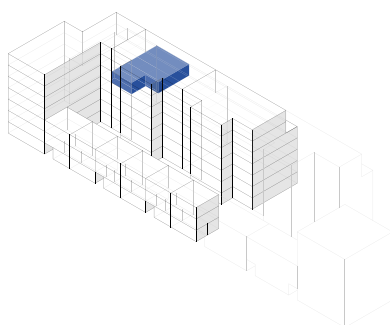
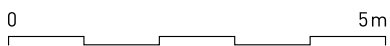
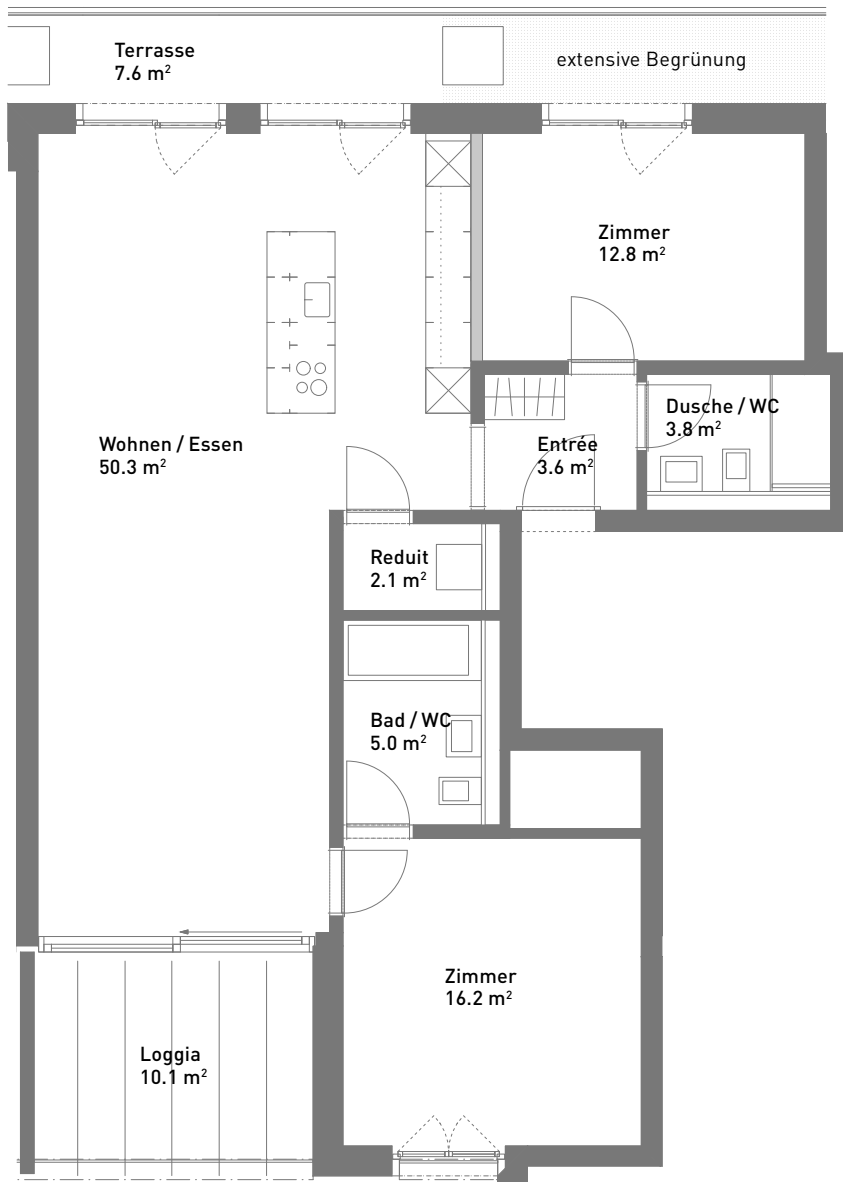


# 3.5-Zimmer-Wohnung, ca. 93 m<sup>2</sup>

Masstab 1:100 (Format A4)



|                     |                       |
|---------------------|-----------------------|
| Spiserstrasse 10    | Wohnung Nr. 10.401    |
| 4. Obergeschoss     |                       |
| Aussenflächen       | ca. 17 m <sup>2</sup> |
| Keller              | ca. 8 m <sup>2</sup>  |
| Nicht tragende Wand | ■                     |

Spiserstrasse, Zürich

