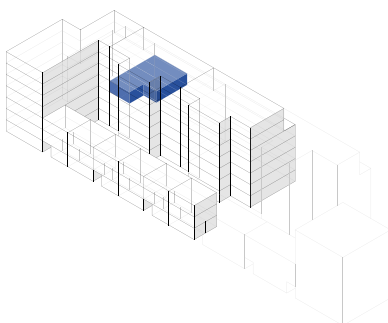
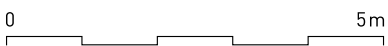
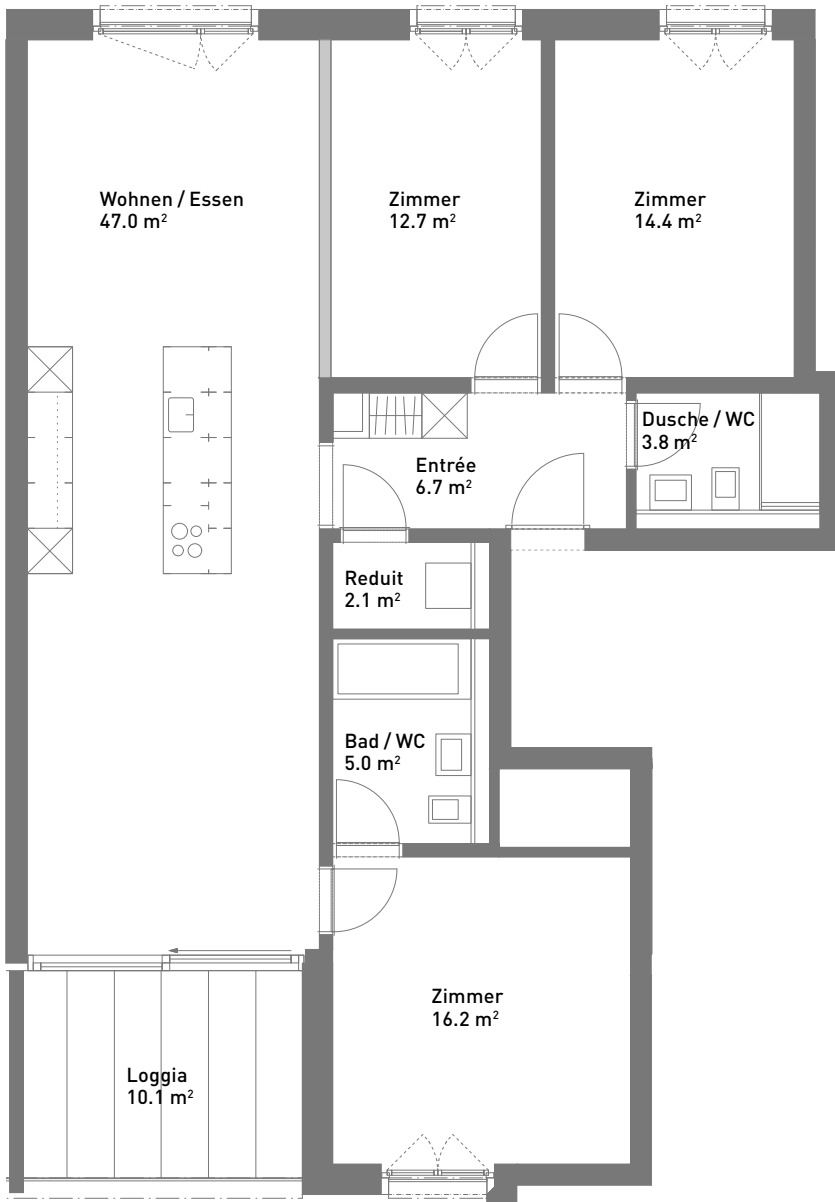


4.5-Zimmer-Wohnung, ca. 107 m²

Masstab 1:100 (Format A4)



Spiserstrasse 10	Wohnung Nr. 10.301
3. Obergeschoss	
Aussenflächen	ca. 10 m ²
Keller	ca. 8 m ²
Nicht tragende Wand	■



Spiserstrasse, Zürich

