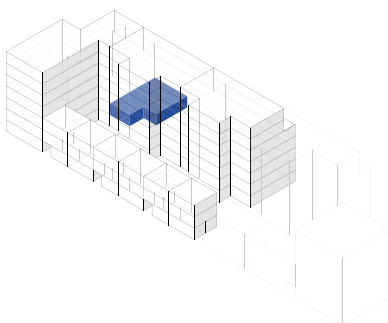
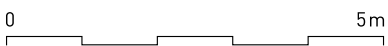
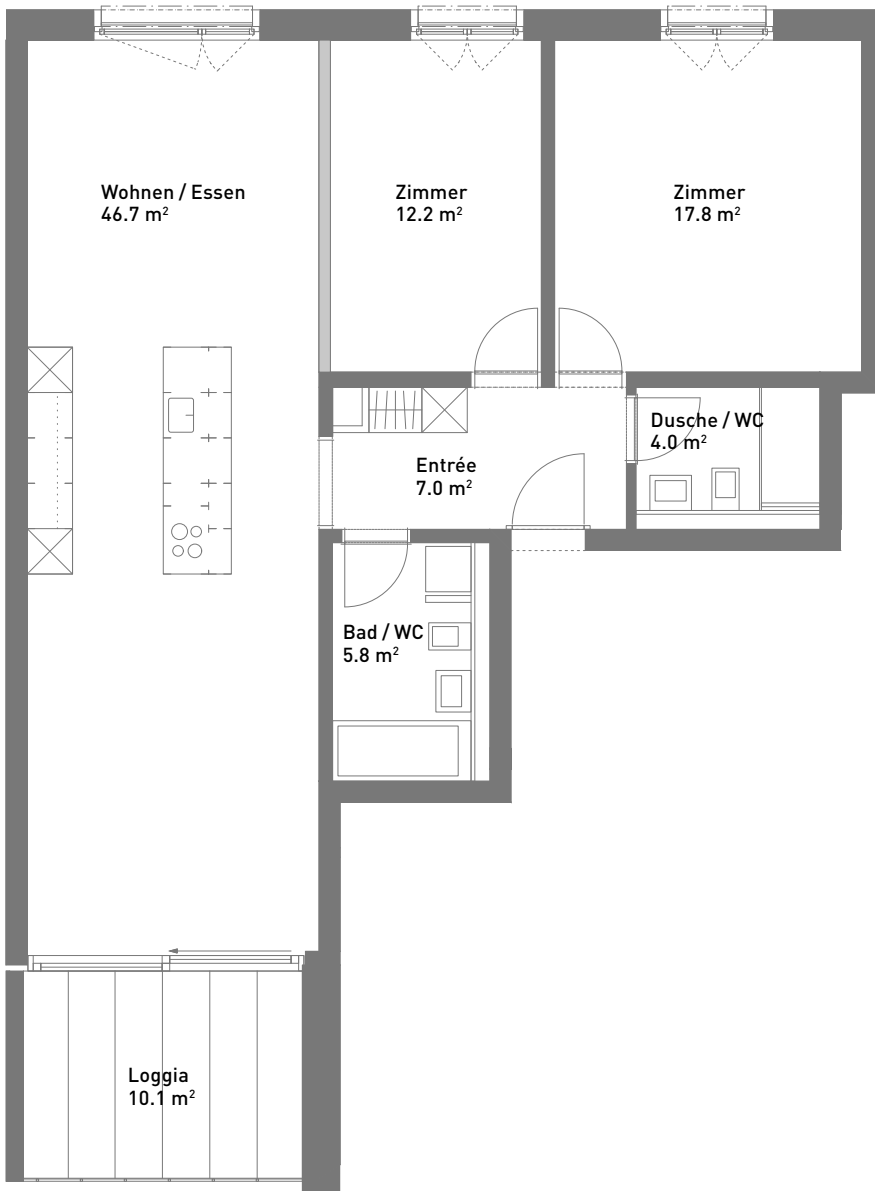


3.5-Zimmer-Wohnung, ca. 93 m²

Masstab 1:100 (Format A4)



Spiserstrasse 10	Wohnung Nr. 10.101
1. Obergeschoss	
Aussenflächen	ca. 10 m ²
Keller	ca. 8 m ²
Nicht tragende Wand	■



Spiserstrasse, Zürich

